

CBSO

City of
Birmingham
Symphony
Orchestra

Prokofiev & Sibelius
Symphony Hall
Thursday 24 October 2024,
2:15pm

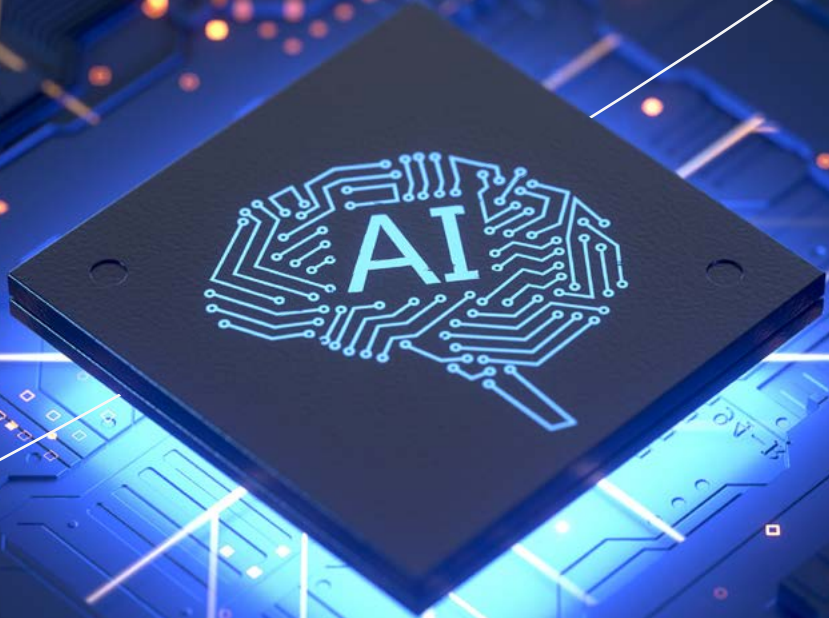
CBSO.CO.UK

Programme £4



**PROKOFIEV &
SIBELIUS**

we simplify the complex.



SCC, Europe's largest privately owned technology solutions provider is proud to be Principal Sponsor of the CBSO.



scc.com

INTRODUCTION

When I joined the CBSO over 20 years ago, Sakari Oramo was our music director. I was very young and inexperienced and had the great privilege of playing many pieces of orchestral repertoire for the first time under his expert guidance. Sibelius's 5th Symphony, the final piece in our concert this afternoon, was one such piece.

Sakari's love and passion for the music of his fellow Finn goes very deep and I feel immensely fortunate to have learnt this music from him. Since those days I have performed the 5th Symphony, and many other of Sibelius's orchestral works, numerous times but I never get tired of it.

To my ears (which may be a little biased....) the 5th Symphony is bookended by particularly fantastic writing for the horn section – the piece opens with us heralding what sounds to me like a glorious sunrise. I enjoy the challenge of playing the huge number of beautiful and heroic solos that have been written for the horn by many composers over the years, but I also love it when composers write for us as a section which is exactly what Sibelius did in this Symphony.

In the finale, we play what I think must be one of Sibelius's most famous musical ideas: a repeated bell-like, majestic motif that is passed between the two pairs of horns. The story goes that this music came to him after watching a flock of swans pass overhead - perhaps you'll be able to picture this image as you hear us play this afternoon.



Still, Threnody (In Memory of Jean Sibelius), 6mins

Prokofiev, Piano Concerto No.2 in G minor, Op.16, 31mins

- I. Andantino
- II. Scherzo: Vivace
- III. Moderato
- IV. Finale: Allegro tempestoso

Interval

Sibelius, No.5 in E-flat Major, Op.82, 30mins

- I. Tempo molto moderato - Allegro moderato - Presto
- II. Andante mosso, quasi allegretto
- III. Allegro molto - Misterioso

Jonathon Heyward Conductor
Yeol Eum Son Piano

LEGACY DONORS' RECEPTION

From 1:30pm pre-concert and during the interval.

We are happy for you to take photos and short videos at our concerts during applause breaks. We ask that you are mindful of disturbing artists and other audience members. Please dim the brightness on your phone, and do not use your flash.

We also regularly take photographs for promotional use, so you may see a professional photographer at our concerts. Please ask a member of the front of house team if you have any questions about this.

To ensure that everyone is able to enjoy the performance, please make sure your mobile phone is set to silent.

Principal Funders:

PROKOFIEV & SIBELIUS

In the mid-twentieth century Sibelius was massive: a big influence on composers and audiences loved him. Still's Threnody is a stunning tribute after Sibelius' death. Prokofiev's Piano Concerto No.2 crackles with energy - an athletic workout for the brilliant Yeol Eum Son. Sibelius's exuberant Symphony No.5 was inspired by the sight of flying swans: 'One of my greatest experiences!' he wrote. 'Lord God, what beauty!'

William Grant Still (1895 - 1978)

THRENODY (IN MEMORY OF JEAN SIBELIUS)

Still was commissioned by conductor Fabien Sevitzky to write a piece marking the centenary of Sibelius' birth, which fell in 1965. It was in fact only eight years since Sibelius died, the Finnish composer having lived to the age of almost 92. It was a relatively late work for the 70-year old Still, who had in recent years struggled to get commissions. He had been prolific and hugely popular throughout the 1930s and 1940s, writing symphonies and operas as well as film and radio scores, despite the horrific racial discrimination he and other black composers faced. While only occasionally overtly political in his works - the powerful cantata *And They Lynched him on a Tree* (1940) is an exception - he consciously drew on idioms associated with African-American music, including the blues. His acclaimed *Afro-American Symphony* was written in 1930. He was more political in his writings and public

talks, and was particularly keen to break down those boundaries and prejudices which attempted to keep black composers out of the concert hall. His aim was to fulfil what he termed a 'purpose larger than mere music'. As he continued: 'If it will help in some way to bring about better interracial understanding in America and in other countries, then I will feel that the work is justified.'

By 1965 orchestral commissions were thin on the ground, so Still was glad to accept this commission - not least because of his attachment to Sibelius's music. In common with many American composers of his age, Still would have been profoundly influenced by the vogue for Sibelius in the 1920s, and shared in common with him a strong sense of nationhood. After Still's death, music critic Earl Calloway linked Still's name with that of Sibelius (as well as Glinka, Dvořák, and others) in terms of their 'nationalist' music. Sibelius himself, in a rare moment of enthusiasm for another composer, had spoken warmly of Still's *Afro-American Symphony*.

A 'Threnody' is a song of lamentation for the dead and – naturally – is of a sombre, sometimes heartbreaking quality. Still begins his in an uncharacteristic mood for a lament – with a burst of brass. Yet as some have pointed out, this is quite possibly a nod to the brass opening of Sibelius' famous tone poem Finlandia. What follows is a gently melancholy orchestral 'song', lightly tinged with blues, and very much recalling the musical idiom of the Afro-American Symphony. The central section, with its rhythmic theme and pulsing drums, is a sorrowful funeral march, given warmth by richly scored strings. The piece closes sombrely, the brass now muted.

Sergei Prokofiev (1891 - 1953)

PIANO CONCERTO NO.2

Prokofiev was known for being a rebellious, confident, not always agreeable character. His early piano pieces were experimental and as prickly as the man himself; the dissonances in his Piano Concerto no. 2 caused a scandal at the 1913 premiere (one critic noted a couple fleeing for the exit exclaiming 'Music like that can drive you crazy!', while others hissed, and someone reportedly cried that their cat could write better music). Yet Prokofiev was capable of great personal tenderness: both the Concerto and his Sonata no. 2 were dedicated to the memory of his friend Maximilian Schmidthof, who had committed suicide in 1913.

Given the technical demands of the Concerto, we can fully appreciate what a gifted pianist Prokofiev was, as he gave the first performance in 1913. The first movement opens unobtrusively with a few orchestral bars, before the soloist arrives with a rhapsodic Rachmaninoff-ish theme, the orchestra periodically shimmering into view. This mood is periodically intercut with fiendishly virtuosic passages and what Herbert Glass has called a 'knuckle-



PROKOFIEFF, 1918.
BAIN NEWS SERVICE, PUBLIC DOMAIN, VIA WIKIMEDIA COMMONS.

busting cadenza' at the end of an elaborate solo passage lasting some 4 minutes. The orchestra surges back to life briefly before dissolving, with the soloist, into an exhausted hush at the close of this extraordinary movement.

In the second movement the pianist plays rapid semiquavers literally throughout, without a single pause for breath. Other than playfully – or wickedly – throwing in a sudden bar in 3-time, this is a 'moto perpetuo' with a relentless beat. The orchestra scrambles to keep up, occasionally offering bursts of commentary as if astonished at the pianist's activity. Marked 'Intermezzo,' the third movement begins – and largely continues – as a grotesque march. The central section has an uneasy playfulness, with piano glissandi ('gliding' down the keyboard) accompanying a woody theme in the winds and strings.

The march returns, with some aggressive snarls, before a muted close. Finally, after a hectic beginning to the fourth movement, the Concerto finds its way back to the softer, more introverted style of the first movement. Introduced by a processional orchestral passage, the piano, for almost the only time, slows down to a relatively simple theme drawn from the 'processional' music. While the piano revs up again, the theme takes on an almost rhapsodic quality. Another lengthy cadenza, follows which – apart from an eerie episode for piano, clarinet and cello – takes everything up a gear, and the Concerto plays out the remaining minutes in cascades of fireworks. While some maybe hissed at the premiere, others declared it a work of genius: listeners today would surely be inclined to the latter view.

Jean Sibelius (1865 - 1957)

SYMPHONY NO.5

Sibelius' Fifth Symphony – the fifth of seven in total – was premiered, conducted by Sibelius himself, on the evening of his 50th birthday on 8 December 1915. It is, unusually, entirely in a major key and has an optimistic, even joyful character especially in the final movement. This was possibly a response to the considerably bleaker Symphony no. 4 which preceded it. But it also has a restless, occasionally jittery quality, perhaps reflecting the erratic nature of its composer. Sibelius was a mass of contradictions: a hard-worker, yet frequently given to extravagant drinking and dining; a family man (fathering six daughters with his wife Aino), yet the marriage was stormy due to Sibelius's frequent absences, hard-living, and over-spending. Not long after completing Symphony No 5 he was on the brink of having his grand piano confiscated by bailiffs (he was fortunately bailed out by a wealthy fan).

He revised the work several times after the premiere, most drastically by compressing the original first and second movements into one, though this larger movement retains the contrasting sections. The opening melody is grand and spacious, rising nobly from the horn section before triggering a series of themes across the woodwinds. An extrovert, swinging tune in the brass about two-thirds through gives a foretaste of the finale. The finale's main theme seems on the brink of bursting out through the gentle, lyrical texture of the Andante, though the movement has a wistful, almost Viennese waltz-like character of its own. The finale starts in a scurrying mood and with a great sense of anticipation. When it finally appears, the famous theme, inspired by the sight of swans, feels like a sunrise: as Sibelius wrote in his diary, 'Today at ten to eleven I saw sixteen swans. One of my greatest experiences! Lord God, what beauty! They circled over me for a long time. Disappeared into the solar haze like a gleaming silver ribbon.' The swans generously allow a beautiful counter-theme to share their musical space at the first appearance. After a further development of the 'scurrying' of the opening, the swans reappear, muted at first as if from far away, then growing in power, once more alongside its counter-melody. The conclusion of the Symphony is extraordinary. The surging, romantic drama abruptly ceases, interrupted by six epic, fortissimo chords – surrounded by silence.

© Lucy Walker

Conductor

JONATHON HEYWARD



© LAURA THIESBRUMMEL

Jonathon Heyward is Music Director of the Baltimore Symphony Orchestra and Renée and Robert Belfer Music Director of the Festival Orchestra of Lincoln Center. Recent and future highlights include debuts and re-invitations with the London Philharmonic, London Symphony, BBC Symphony, BBC National Orchestra of Wales, Royal Scottish National Orchestra, and Scottish Chamber Orchestra. In continental Europe, Jonathon performs with NDR Elbphilharmonie Orchester, Tonhalle Düsseldorf, Danish National Symphony, Castilla y León Symphony, Galicia Symphony, Brussels Philharmonic, Orchestre National Bordeaux Aquitaine, and MDR-Leipzig Symphony. In high demand in the USA, Jonathon conducts the New York Philharmonic, the Atlanta, Detroit, Houston, Seattle, Dallas, and St Louis symphonies, and the Minnesota Orchestra. Born in South Carolina, Jonathon began his musical training as a cellist. He studied conducting at the Boston Conservatory of Music and London's Royal Academy of Music. Before leaving the Academy, he was appointed assistant conductor of the Hallé Orchestra, where he was mentored by Sir Mark Elder. In 2023, he was named a Fellow of the Royal Academy of Music.

YEOL EUM SON

Pianist Yeol Eum Son, born in South Korea, in 1986, is renowned for her exceptional artistry and captivating performances. Yeol Eum has enchanted audiences worldwide with her boundless artistic exploration and profound musicality, establishing herself as one of the foremost pianists of her generation. Across the 24/25 season, Yeol Eum makes orchestral debuts with the BBC Symphony at the Barbican Centre in London, Vienna Tonkünstler Orchestra at Vienna Musikverein, National Symphony Orchestra of Ireland, and the Los Angeles Philharmonic. Yeol Eum's past seasons' collaborations include the Konzerthaus Orchestra Berlin, Castilla y León, Spanish Radio and Television Symphony, BBC Philharmonic, and Royal Liverpool Philharmonic. In North America and Australia Yeol Eum has recently made appearances with Detroit, San Diego, Sydney and Tasmania Symphony Orchestras. Recent recital highlights include debut appearances at the Edinburgh International Festival, Rosendal and Risør Chamber Music Festival, and Singapore International Piano Festival, as well as return visits to the Helsingborg Piano Festival in Sweden, and Melbourne Recital Centre. In addition to Yeol Eum's intense performance diary, she has an active recording schedule with Naïve Records.



© MARCO BORG GREVE



© PATCH DOLAN

PROUD TO BE BIRMINGHAM'S ORCHESTRA

We are Birmingham's orchestra – loud and proud. An internationally celebrated symphony orchestra that makes music that matters to the people of Birmingham, the West Midlands and beyond.

A family of 90 incredible musicians, we exist to create exciting musical experiences for all. From brightening up the morning commute, to inspiring audiences and musicians of the future – we make epic, powerful, meaningful music that fills concert halls, communities, streets, schools and lives with passion, excitement, inspiration, hope and joy.

We've come from all over the world, but we're at home right here in Birmingham. See us at Symphony Hall playing some of the greatest symphonic music of all time, at pop-up performances around the city, at the CBSO Centre performing intimate small-scale gigs or in schools, community centres, libraries and even the occasional pub!

We're musicians, but we're also parents, teachers, runners, gardeners, writers, sports fans, foodies and so much more. We're part of your city, and we couldn't be happier to be here to play, share, write, sing, live and breathe music with you!

PERFORMERS

VIOLIN I

Nathaniel
Anderson-Frank
Clare Thompson
Imogen East
Nathan Bomans*
Jane Wright*
Robert Bilson
Julia Aberg*
Bethan Allmand*
Mark Robinson*
Cathy Chambers
Wendy Quirk
Kath Gittings
Angus Bain
Adam Hill
Olivia Jago
Luke Coomber

VIOLIN II

Lowri Porter*
Moritz Pfister*
Charlotte Skinner
Georgia Hannant*
Bryony Morrison*
Yuriko Matsuda
Tam Mott
Gabriel Dyker*
Tim Birchall*
Victoria Farrell-Reed
Amy Littlewood
Martin Owen
Henry Salmon
Eleanor Gilchrist

VIOLA

Chris Yates*
Adam Römer*
David BaMaung*
Catherine Bower*
Michael Jenkinson*
Sarah Malcolm*
Amy Thomas*
Annie-May Page
Jessica Tickle*
Helen Roberts
Catherine Howe
Abby Bowen

CELO

Tim Gill
Arthur Boutillier*
Kate Setterfield*
Miguel Fernandes*
Catherine
Ardagh-Walter*
Helen Edgar*
Sarah Berger
Josh Mountford
Anna Joubert
Philippa Schofield
Flora McNicoll

DOUBLE BASS

Julian Atkinson*
Jeremy Watt*
Julian Walters*
Mark Goodchild*
Ruohua Li
David Burndrett
Tom Neil
Adam Precious

FLUTE

Anna Wolstenholme
Helen Benson*

OBOE

Eduardo Garcia Lopez
Emmet Byrne*

CLARINETS

Oliver Janes*
Joanna Patton*
#

BASSOON

Nikolaj Henriques*
Tony Liu

HORN

Elsbeth Dutch*
Joel Ashford
Mark Phillips*
Jeremy Bushell*
Martin Wright*
#

TRUMPET

Jason Lewis*
Stuart Essenhigh
Jonathan Quirk*
#

TROMBONE

Robert Moseley
Anthony Howe*
#

BASS TROMBONE

David Vines*
#

TUBA

Stephen Calow

TIMPANI

Matthew Hardy*
#

PERCUSSION

Adrian Spillett*
Andrew Herbert

HARP

Deian Rowlands

Recipient of the CBSO Long Service Award

* Supported player

Our work is only possible because of our kind supporters and donors.

THANK YOU

EXCEPTIONAL SUPPORTERS

The following supporters have developed the CBSO's world-class excellence and community reach by offering exceptional philanthropic support to the CBSO and CBSO Development Trust – thank you!

- City of Birmingham Orchestral Endowment Fund
- John Osborn CBE
- David and Sandra Burbidge (Eugene Tzinkidelean): supporters of the Burbidge leader position
- Sir Dominic and Lady Cadbury
- Alison and Jamie Justham
- Barry & Frances Kirkham
- Maurice Millward
- Jerry Sykes (Catherine Ardagh-Walter)
- Peter How (Tim Birchall)
- Chris and Jane Loughran (Jonathan Martindale)

BENEFACTORS AND DONORS

We are grateful to the following supporters for their major contributions.

- Viv and Hazel Astling
- Peter and Isabel Churcher
- Jane Epstein
- John Cole and Jennie Howe (Richard Thomas)
- David Knibb in memory of Lorraine (Jonathan Quirk)
- Anita and Wyn Griffiths
- Ian McAlpine
- Patrick and Tricia McDermott
- (Helen Edgar and Rachael Pankhurst)
- Felonious Mongoose in memory of Dolores (Jason Lewis)
- Gay Nebel
- Christopher Oakley
- S Randon

TRUSTS AND FOUNDATIONS

- 29th May 1961 Charitable Trust
- Art Mentor Foundation Lucerne
- The Austin And Hope
- Pilkington Trust
- Backstage Trust
- Baron Davenport's Charity
- Clive Richards Foundation
- Dumbreck Charity
- Dunard Fund
- Esmee Fairbairn Foundation
- Fidelio Charitable Trust
- Garfield Weston Foundation
- George Fentham
- Birmingham Charity
- GJW Turner Trust
- Grantham Yorke Trust
- Idlewild Trust
- John Ellerman Foundation
- John Horniman's
- Children's Trust
- The Leverhulme Trust
- Miss Albright Grimley Charity
- Rix-Thompson-Rothenberg Foundation
- Scops Arts Trust
- The Alan Woodfield Charitable Trust
- The Andor Charitable Trust
- The Charles Brotherton Trust
- The D'Oyly Carte Charitable Trust
- The Edward and Dorothy Cadbury Trust
- The Fenton Arts Trust
- The George Henry Collins Charity
- The Golsoncott Foundation
- The Grey Court Trust
- The Grimmitt Trust
- The Helen Rachael Mackaness Charitable Trust
- The JABBS Foundation
- The John Avins Trust
- The John Feeney Charitable Trust
- The LJC Fund
- The Lord Austin Trust
- The M K Rose Charitable Trust
- The MacRobert Trust
- The McLay Dementia Trust
- The Oakley Charitable Trust
- The Perry Family Charitable Trust
- The Patrick Trust
- The Rachel Baker Memorial Charity
- The Rigby Foundation
- The Roger and Douglas Turner Charitable Trust
- The Rowlands Trust
- The S and D Lloyd Charity
- The Saintbury Trust
- The Uncle Bill Trust

PUBLIC FUNDERS



Supported using public funding by
**ARTS COUNCIL
ENGLAND**



**Birmingham
City Council**

PRINCIPAL SPONSOR



CORPORATE PARTNERS



Deloitte.

**CHARLES
STANLEY**
Wealth Managers

SOFAS & STUFF



NBB | LAW



EDUCATION PARTNERS



ROYAL
BIRMINGHAM
CONSERVATOIRE

**Services
For Education**



STRATEGIC & IN-KIND



THE SOUND OF THE FUTURE

The Sound of the Future is our £12.5m fundraising campaign. Launched to mark the CBSO's centenary, it will ensure the Orchestra's future of the benefit of everyone across Birmingham and the West Midlands.

If you would like to find out more, or make a gift to support our campaign, please visit cbsoco.uk/support-us



MEMBERS

Over 1,500 members contribute annually to ensure the Orchestra's vital work both on and off the concert platform can happen. Thank you to each and every one of you.

SYMPHONY CIRCLE

John Cole and Jennie Howe
(Richard Thomas)
Gill and Jonathan Evans
(Charlotte Skinner)
Anita and Wyn Griffiths
Len Hughes and Jacquie Blake
(Anthony Alcock)
David Knibb, in memory of Lorraine
(Jonathan Quirk)
Ian and Pam MacLennan
(Mark Phillips)
Roger and Jenny Otto,
in memory of Juliet
Graham Russell and Gloria Bates
(Georgia Hannant)
Mark and Amanda Smith
(Catherine Bower)
and our other anonymous supporters.

LONDON CIRCLE

Philip Abrams and Ida Levine
Richard and Patricia Burbidge
David and Marilyn Clark
Peggy Czyzak-Dannenbaum
Andrew Deacon
Belinda McMicking
Kannah S Muthalagappan and family
Fergus Randolph
Graeme and Sue Sloan
Hattie and Tony Smart

CONCERTO CIRCLE

Viv and Hazel Astling (Lowri Porter)
John Bartlett (Mark O'Brien)
The Barwell Charitable Trust
Allan and Jennifer Buckle
(Helen Benson)
Jill S Cadbury (Julia Aberg)
Charlie and Louise Craddock
(Bethan Allmand)
Judith Cutler and Keith Miles
David Gregory (Nate Bomans)
The Andrew Harris Charitable Trust
Dr Allan Hough (Arthur Boutellier)
Peter How (Tim Birchall)
Alison and Jamie Justham
(David Vines)
Valerie Lester (Jacqueline Tyler)
Carole McKeown and David Low
(Miguel Fernandes)
Paddy and Wendy Martin
(David BaMaung)
Patrick and Tricia McDermott
(Helen Edgar and
Rachael Pankhurst)

Philip and Clare Moore
(Katherine Thomas)
Gay Nebel and Trevor Clarke
(Bryony Morrison)
Frank North
Angela O'Farrell and Michael Lynes
(Toby Kearney)
Joe O'Meara
Dianne Page (Catherine Arlidge)
Gerard Paris (Amy Jones)
Simon and Margaret Payton
(Julian Atkinson)
Robert Perkin
Margaret Rogers (Moritz Pfister)
Mr D P Spencer (Oliver Janes)
Jan and Peter Sterling
(Jeremy Bushell)
Lesley Thomson (Jessica Tickle)
Adam Tickell and Bridget Kelly
Basil and Patricia Turner
(Marie-Christine Zupanic)
In memory of Howard Vero
(Richard Watkin)
Catherine Wall
Michael Ward
Diana and Peter Wardley
(Oliver Janes)
Isabel, Peter and Christopher,
in loving memory of Ernest
(Elspeth Dutch)
Robert Wilson (Emmet Byrne)
and our other anonymous supporters.

The following players are supported
by anonymous members of the
Overture, Concerto and Symphony
Circles, to whom we are very grateful:
Mark Goodchild
Sarah Malcolm
Joanna Patton
Adam Römer
Jeremy Watt

OVERTURE CIRCLE

Jan Adams in memory of Mike
(Eduardo Vassallo)
Katherine Aldridge,
in memory of Chris
Michael Allen in memory of Yvonne
Miss J L Arthur (Julian Walters)
Kiaran Asthana
Mr M K Ayers
Peter and Jane Baxter
Christine and Neil Bonsall
Mrs Jennifer Brooks
in memory of David (Julia Aberg)

Helen Chamberlain in memory of
Allan Chamberlain (Sally Morgan)
Dr Anthony Cook and Ms Susan Elias
Robin and Kathy Daniels
Julian and Lizzie Davey
Jenny Dawson
Dr Judith Dewsbury
in memory of Tony (Kate Setterfield)
Alan Faulkner
Elisabeth Fisher (Colette Overdijk)
Mary and Tony Hale
Cliff Hubbard
Lord Hunt of Kings Heath
In memory of Harry and Rose Jacobi
Mr Michael and Mrs Elaine Jones
John and Jenny Kendall
John Kent, in memory of Lisa
(Veronika Klirova)
Jane Lewis
Richard Lewis
James and Anthea Lloyd
Tim Marshall (Nikolaj Henriques)
Carol Miller
Philip Mills
Paul and Elaine Murray
Ian C Norton
Andrew Orchard and Alan Jones
Rob Page
Sir Michael and Lady Joan Perry
Dr John Peterson
Rosalynd and Philip Phillips
Julie and Tony Phillips (Jack Greed)
Clive and Cynthia Prior
Ian Richards
Peter and Shirley Robinson
Dr Roger Shinton
Eleanor Sinton (Adrian Spillet)
Mr A M and Mrs R J Smith
Pam and Alistair Smith
William Smith
Mr M and Mrs S A Squires
Brenda Sumner
Janet and Michael Taplin
Tenors of the CBSO Chorus
(Joanna Patton)
Alan Titchmarsh MBE
(Matthew Hardy)
Mr R J and Mrs M Walls
Jonathan Waterfield
Shearer West
Mr E M Worley CBE and
Mrs A Worley DL
Richard and Emma Yorke
Roy Walton
and our other anonymous supporters.

GOLD PATRON

Richard Allen and Gail Barron
 Angel and Stephen Bottley
 Mike Bowden
 Patrick Burns
 Lady Cadbury
 Mr C J M Carrier
 Christine and John Carroll
 Tim Clarke and family
 Professor and Mrs M H Cullen
 Roger and Liz Dancey
 Sir Ian and Lady Dove
 Geoff and Dorothy Fearnheough
 Nicola Fleet-Milne
 Susan and John Franklin
 Mr R Furlong and Ms M Penlington
 Insa Nolte and Simon Green
 John Gregory in memory of Janet
 Tony and Shirley Hall
 Dr Melvyn Kershaw
 Carmel and Anthony Mason
 Nigel and Sarah Moores
 Chris and Eve Parker
 Phillipa and Laurence Parkes
 David Wright and Rachel Parkins
 Chris and Sue Payne
 Canon Dr Terry Slater
 Dr Barry and Mrs Marian Smith
 Pam Snell
 Ian and Ann Standing
 Bryan and Virginia Turner
 William and Janet Vincent
 Revd T and Mrs S Ward
 and our other anonymous supporters.

SILVER PATRON

Mr S V Barber
 Mr P G Batty
 Paul Bond
 Mr A D and Mrs M Campbell
 Dr Anand Chitnis MBE and
 Mrs Sarah Chitnis
 Peter and Jane Christopher
 Jane Fielding and Benedict Coleman
 Alan Cook
 David & Marian Crawford-Clarke
 Mrs A P Crockson
 Dr Margaret Davis and Dr John Davis
 Alistair Dow
 Naomi and David Dyker
 Paul and Sandi Evans
 Peter Gorbng
 Mrs D R Greenhalgh
 Sue Clodd and Mike Griffiths
 Cliff Haresign

Bob and Elizabeth Keevil
 Rodney and Alyson Kettel
 Rebecca King,
 in loving memory of Ian
 Mr Peter T Marsh
 James and Meg Martineau
 Peter and Julia Maskell
 Dr and Mrs Bernard Mason
 Anthony and Barbara Newson
 Richard Newton
 Mrs A J Officer
 Liz and Keith Parkes
 John Peniket
 Mr R Perkins and Miss F Hughes
 Dr and Mrs Plewes
 Revd Canon Richard & Mrs Gill Postill
 Kath and Mike Poulter
 Eileen Poxton in memory of
 Reg Poxton
 Dr and Mrs R C Repp
 Ray Smith
 Shelia and Vic Stenning
 Andy Street
 John and Dorothy Tesh
 Professor and Mrs J A Vale
 Tony and Hilary Vines
 Peter Walling
 Stephen Williams
 John and Daphne Wilson
 Geoff and Moira Wyatt
 and our other anonymous supporters.

PATRON

Elisabeth & Sherzad Al-Khalifa
 Mrs Thérèse Allibon
 Lloyd Allington
 Val and Graham Bache
 Andrew Baker and Anne Almond
 John Baldwin
 Andrew Barnell
 Mr and Mrs Barnfield
 Di Bass
 Paul Beckwith
 Mr I L Bednall
 Peter and Gill Bertinat
 Philip and Frances Betts
 Mrs Ann Billen
 Michael and Beryl Blood
 Bridget Blow CBE
 Anthony and Jennifer Bradbury
 Dr Jane Flint Bridgewater and
 Mr Kenneth Bridgewater
 Mr Arthur Brooker
 Ross Browning
 Mr G H & Mrs J M Butler

Benedict and Katharine Cadbury
 Jeannie Cadman
 Elizabeth Ceredig
 Carole and Richard Chillcott
 Dr A J Cochran
 Dee and Paul Cocking
 Mrs S M Cooite in memory of John
 D and M Coppage
 Maureen and Malcolm Cornish
 Luned Corser
 Maurice and Ann Crutchlow
 Sue Dalley and Martin Willis
 Robert and Barbara Darlaston
 Lynda and Lesley Davies-Bailey
 Trevor Davis
 Kath Deakin
 Dr J Dilkes
 Brian and Mary Dixon
 Thomas Dobson
 Barbara Donaldson
 Terry Dougan and Christina Lomas
 John Drury
 Catherine Duke
 Linda and William Edmondson
 Alex and Fran Elder
 Miss E W Evans
 Mr G L & Mrs D Evans
 Dr D W Eyre-Walker
 Chris Fonteyn MBE
 Alan and Christine Giles
 Prof J Gilkison and Prof T Hocking
 R and J Godfrey
 Jill Godsall
 Peter Gorbng
 Laura Greenaway, in memory of
 David Richards
 In Memory of Jack and Pam Nunn
 Roger and Gaye Hadley
 Miss A R Haigh
 Stephen Hale and Stephen Wood
 Mr W L Hales
 Malcolm Harbour
 Ian Hartland
 Phil Haywood in memory of Ann
 Keith Herbert and Pat Gregory
 Susan Holmes in memory of Peter
 Valerie and David Howitt
 Penny Hughes
 Henry and Liz Ibberson
 Mr R M E & Mrs V Irving
 Ken and Chris Jones
 Paul Juler
 Mrs P Keane
 Mr and Mrs R Kirby
 Bill Lane

Brian Langton
 Colin and Joan Lapworth
 Mrs D Larkam
 Steve Leonard and Debbie Fuller
 Professor David London
 Gill and Philip Marshall
 Geoff and Jenny Mason
 Mr A A McLintock
 Patro Mobsby
 Geoff Mullett
 P J and H I B Mulligan
 Mrs M M Nairn
 Richard and Shirley Newby
 Richard Newton and
 Katharine Francis
 Brian Noake
 Ms E Norton OBE
 Marie and John O'Brien
 Mr and Mrs R T Orme
 S J Osborne
 Nigel Packer
 Rod Parker and Lesley Biddle
 Graham and Bobbie Perry
 Dr Ken and Diana Pollock
 Neal Porter
 David and Julia Powell
 Gill Powell and John Rowlatt
 C Predota
 Roger Preston
 Richard and Lynda Price
 John Randall and Ling Ong
 Dr and Mrs K Randle
 John Rawnsley and Hanne Hoeck
 Mr Gary Richardson and
 Mr Charles Rumford
 Katy and David Ricks
 Peter and Pauline Roe
 Jane and Peter Rowe
 Helen Rowett and David Pelteret
 Dr Gwynneth Roy
 Steve and Barbara Royston
 Mrs L J Sadler
 In memory of Cliff Sage
 Carole and Chris Sallnow
 Stephen Saltaire
 William and Eileen Saunders
 Margaret and Andrew Sherry
 Dr and Mrs Shrank
 Keith Shuttleworth
 Elizabeth Simons
 Mr N R Skelding
 Ed Smith
 Mary Smith and Brian Gardner
 in memory of John and Jen
 Matthew Somerville and
 Deborah Kerr
 Lyn Stephenson
 Anne Stock
 Mr and Mrs J B Stuffs
 J E Sutton
 Barbara Taylor in memory of
 Michael Taylor
 Claire Tilt
 Mrs J H Upward

Robert van Elst
 Bob and Louise Vivian
 Kit Ward
 Ann Warne
 Neil Warren
 Mrs M L Webb
 Elisabeth and Keith Wellings
 Mr and Mrs J West
 Pippa Whittaker
 John and Pippa Wickson
 Richard and Mary Williams
 Barry and Judith Williamson
 John Winterbottom
 Caroline and Richard York
 and our other anonymous supporters.

LEGACY DONORS

The late Mrs Abbott
 The late Anne Adams
 In memory of Chris Aldridge
 The late Trevor Almond
 In memory of Peter Ashton
 In memory of Foley L Bates
 The late Terence Baum
 The late Elizabeth Bathurst Blencowe
 The late Mr Peter Black
 The Late Miss G Brant
 The late Mary Brown
 The late Michael Brown
 The late Richard Busby
 The late I M Chesner
 The late Colin W Clarke
 The late Roy Collins
 David in memory of Ruth
 The late Mr Peter Day
 The late K Draper
 The late Ivor Dudley
 The late Miss Margery Elliott
 The late Eileen Fairhurst
 The late Mary Fellows
 The late Elnora Ferguson
 The late Anne Fletcher
 The late June Fluck
 The late Wally Francis
 The late Alan Goodwin
 The late Colin Graham
 The late Averil and Terry Green
 The late Kenneth Guest
 The late Mrs Marjorie Hildreth
 The late Roger Hill
 The late Estella Hindley
 The late Patricia Homeshaw
 The late Mr Hucker
 The late Rosalind Jackson
 The late William Jones
 The late Michael Jordan
 The late Mrs Thelma Justham
 The late Beresford King-Smith
 The late Professor Robert Knecht
 The late Mr John Thomas Knight
 The late Mr and Mrs F. McDermott
 and Mrs C. Hall
 The late Blyth and Myriam Major
 The late Mrs Mahon

The late Joyce Middleton
 The late Christine Miller
 The late Peter and Moyra Monahan
 The late Arthur Mould
 The late June North
 The late Martin Purdy
 The late Cyril Reeves
 In memory of David Reeve,
 a true music lover
 The late J Renwick
 The late Frederick Richardson
 The late Mrs Edith Roberts
 The late Trevor Robinson
 The late John Roe
 The late Mr Andrew Roulstone
 The late Carl Schwalbe
 The late Thomas Edward Scott
 The late Barbara Shields
 The late Margaret Skene
 The late Mrs C E Smith
 The late Mrs Sylvia Stirman
 The late Marion Stone
 The late Mrs Eileen Summers
 The late Sheri Tullah
 The late Lorraine Westcott
 The late David Wilson

Our anonymous donors and those
 that have pledged to support
 the CBSO through a legacy gift
 in the future.

Credits correct as of
 8 October 2024

MEET THE TEAM

Emma Stenning Chief Executive
Joe Graham Executive Assistant

ARTISTIC PLANNING

Maddi Belsey-Day Artistic Planning and Tours Manager
Jean Attard Assistant Artistic Planning Manager

CONCERTS

Graham Sibley Director of Orchestra Operations
Felix Lo Orchestra Manager
Nicole Wood Assistant Orchestra Manager
Peter Harris Platform Manager
Robert Howard Assistant Platform Manager
Jack Lovell-Huckle Librarian
Nathan Isaac Assistant Librarian

LEARNING & ENGAGEMENT

Tom Spurgin Creative Director –
 Learning & Engagement
Carolyn Burton Learning Programme Manager
Georgia Wells Learning Programme Producer
Helen Butcher Interim Community and
 Talent Development Manager
Alexandra Parker Chorus Manager
Helen Poulter Chorus Producer

AUDIENCES

Beki Smith Director of Audiences
Ruark Jon-Stevens Director of Audiences
 (Maternity Cover)
Melanie Ryan Audience Experience and
 Insight Manager
Anna O'Connor Marketing and Content Manager
Alexandra Georgiadis Marketing and
 Campaigns Coordinator
Hannah Blake-Fathers Content Creator
Lee Hunt Data Analyst
Liam Churchard Designer
Jude Radley Audience Experience Officer
Isabel Clarke Content Coordinator

DEVELOPMENT

Claire Tilt Director of Development
Rachel Bowden Senior Development Manager
Ruj Sanghera Membership Manager
Amy Self Individual Giving Manager
Megan Bradshaw Corporate Partnership Manager
Charlotte Wheeler Events Manager
Rachel Cooper Development Administrator

FINANCE & RESOURCES

Sally Munday Director of Finance and Resources
Alan Johnson CBSO Centre Manager
Hollie Dunster HR Manager
Mark Pallett Finance Manager
Jaspreet Hothi Assistant Accountant
Susan Price Senior Finance Officer
Lindsey Bhagania Assistant Payroll Manager
Peter Clarke Assistant CBSO Centre Manager
Ellis Hudson Assistant Buildings and Facilities Manager
Suni Dhew Receptionist
Molly Welling Receptionist

BOARD OF TRUSTEES

Lord Tony Hall Chair of the Board
Gurpreet Bhatia Trustee
Jane Fielding Trustee
Sir Mark Grundy Trustee
Emily Ingram Trustee
Sundash Jassi Trustee
Chris Loughran Trustee & Chair of the CBSO
 Development Trust
Jules Parke-Robinson Trustee
Catherine Wall Trustee
Helen Edgar Tutti Cello & Player Nominated Trustee
Andrew Herbert Principal Percussion and
 Player Nominated Trustee
Cllr Darius Sandhu BCC Nominated Trustee
Cllr Liz Clements BCC Nominated Trustee

GET IN TOUCH

CBSO Centre, Berkley Street, Birmingham, B1 2LF
 General Enquiries: email information@cbso.co.uk
 or phone **0121 616 6500**. For ticket enquiries,
 or queries directly relating to Symphony Hall,
 please contact B:Music.

UPCOMING CONCERTS...



ROMEO & JULIET

A celebration of Ukraine, and the most famous romance in literature.

Wed 15 Jan 2025, 7:30pm



KAZUKI CONDUCTS SHOSTAKOVICH & BARTÓK

Hungarian dances, Russian violins - and a showcase for the whole orchestra!

Wed 5 Feb 2025, 7:30pm



NORTHERN LIGHTS

Epic landscapes and crossing musical boundaries in Iceland.

Sat 5 Apr 2025, 8pm

Book online at [cbso.co.uk](https://www.cbso.co.uk) or call the B:Music Box Office on **0121 780 3333**

CBSO MEMBERSHIP

From priority booking to members' events and behind-the-scenes information, there are plenty of reasons to join the CBSO.

But it is the people themselves who are at the very heart of our membership. CBSO members can enjoy the chance to share the company of musicians and artists and meet new like-minded friends.

JOIN THE FAMILY

Simply visit [cbso.co.uk/membership](https://www.cbso.co.uk/membership) to sign up online, or call Rachel Cooper on **0121 616 6510**.

We look forward to welcoming you to the family!



Arrive by Metro and immerse yourself in the music

Enjoy your orchestra
experience with
discounted tram travel
and free Park 'n' Ride.

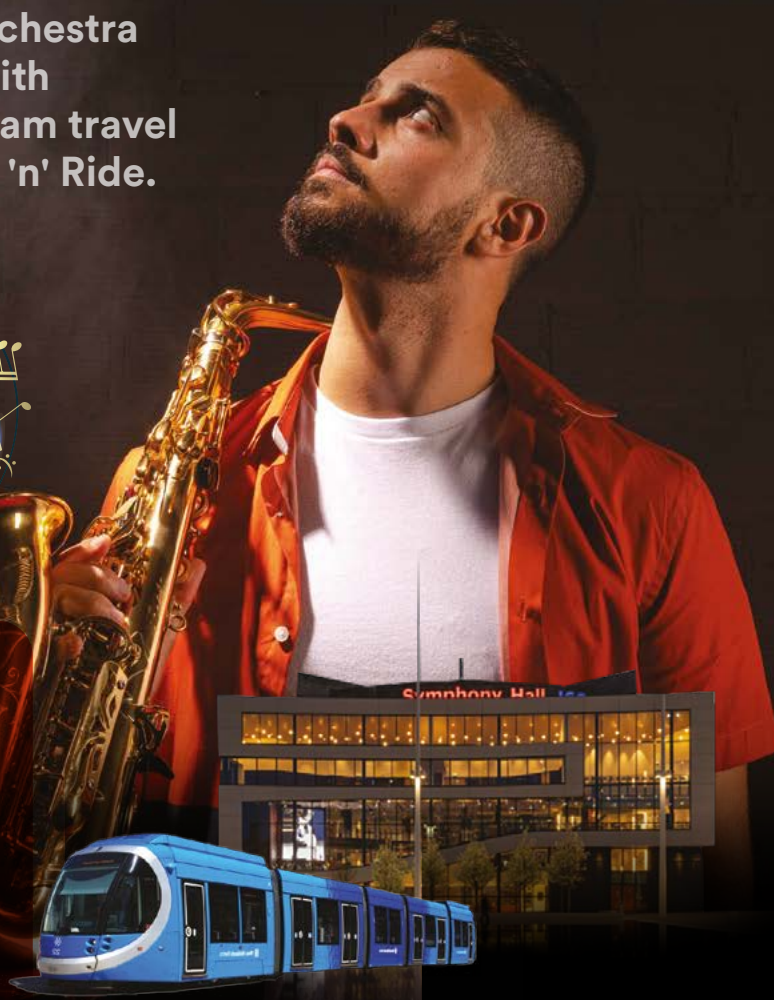


Scan to get
20% off



**Metro Zone 1-4
Off-Peak Day Ticket**

Plan Your Journey
westmidlandsmetro.com



Official Travel Partner

Proud to be Birmingham's Orchestra

CBSO

City of
Birmingham
Symphony
Orchestra

CBSO.CO.UK

Follow us on
Facebook, Instagram,
TikTok and X
@TheCBSO

CBSO Centre
Berkley Street Birmingham, B1 2LF
information@cbsoco.uk
0121 616 6500

WE'RE ALL EARS

We'd love to hear from you!

Complete our survey and be in with the chance of winning a £50 voucher for a restaurant of your choice.

We're working to better understand our audiences, and by completing a survey following a CBSO concert, you can opt in to be entered into the prize draw.



If you'd like to share any additional feedback, or have any questions, please email us at marketing@cbsoco.uk.